

Tuba

FERNANDO MORAIS

SUITE  
BRASILEIRA  
para  
quinteto de metais

- 1 - GEDEAO (BAIÃO)
- 2 - IRREQUIETO (BOSSA NOVA)
- 3 - RENATA (VALSA PAULISTA)
- 4 - PAULINHO NO SAMBA (SAMBA)
- 5 - ISAC NO FRÊVO (FRÊVO)

JULHO/2009

# SUITE BRASILEIRA"

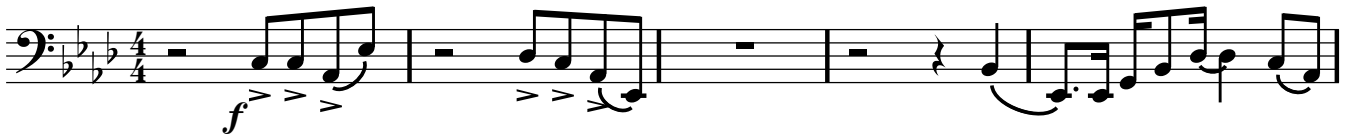
para  
quinteto de metais

FERNANDO MORAIS  
setembro/2004  
revisão em julho/2008

I

## GEDEA<sub>o</sub>

♩ = 100 tempo de baião



6



11



15



19



23



27



Tuba

30

*ff* *mf*

Measures 30-32: Bass clef, key signature of three flats, 7/8 time signature. Measure 30 starts with a fortissimo (*ff*) dynamic and a series of eighth notes. A hairpin crescendo leads to a mezzo-forte (*mf*) dynamic in measure 32.

33

**C**

*ff* *mp* *mf*

Measures 33-37: Bass clef, key signature of three flats, 7/8 time signature. Measure 33 starts with a fortissimo (*ff*) dynamic. Measure 34 has a mezzo-piano (*mp*) dynamic. Measures 35-37 feature accents and a mezzo-forte (*mf*) dynamic.

38

Measures 38-40: Bass clef, key signature of three flats, 7/8 time signature. Measures 38-40 feature a series of eighth notes with accents.

41

*f* *mf*

Measures 41-46: Bass clef, key signature of three flats, 7/8 time signature. Measure 41 starts with a forte (*f*) dynamic. Measure 46 ends with a mezzo-forte (*mf*) dynamic.

47

**D**

*f* *f*

Measures 47-51: Bass clef, key signature of three flats, 7/8 time signature. Measures 47-51 feature a series of eighth notes with accents and a forte (*f*) dynamic.

52

**E**

Measures 52-57: Bass clef, key signature of three flats, 7/8 time signature. Measures 52-57 feature a series of eighth notes with accents.

58

Measures 58-61: Bass clef, key signature of three flats, 7/8 time signature. Measures 58-61 feature a series of eighth notes with accents.

62

Measures 62-65: Bass clef, key signature of three flats, 7/8 time signature. Measures 62-65 feature a series of eighth notes with accents.

66

Measures 66-70: Bass clef, key signature of three flats, 7/8 time signature. Measures 66-70 feature a series of eighth notes with accents.